

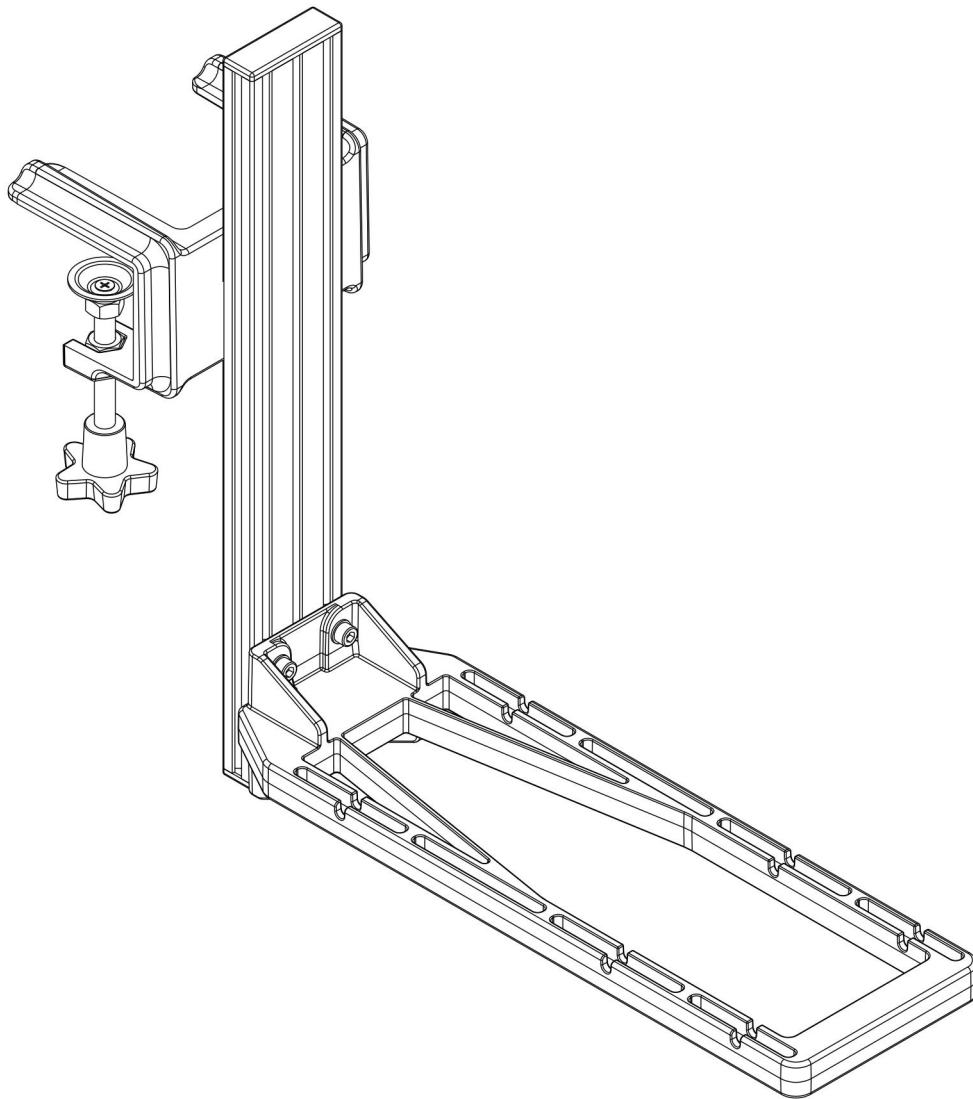
# WINCTRL

Throttle Desk Mount5 with Profile Bar 1

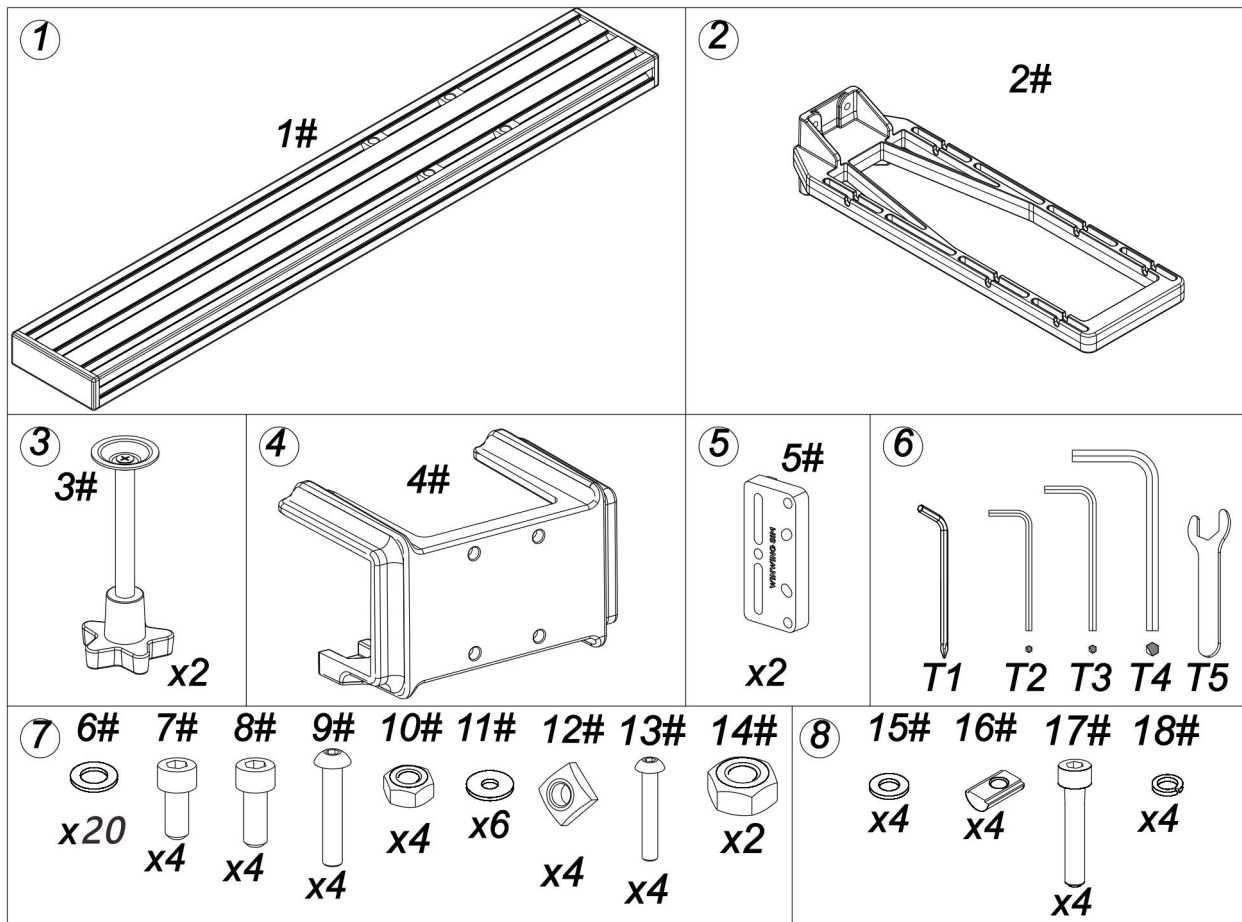
Model MT.N.N.5.1

User Manual

V1.0 2025.04.25



Packing list



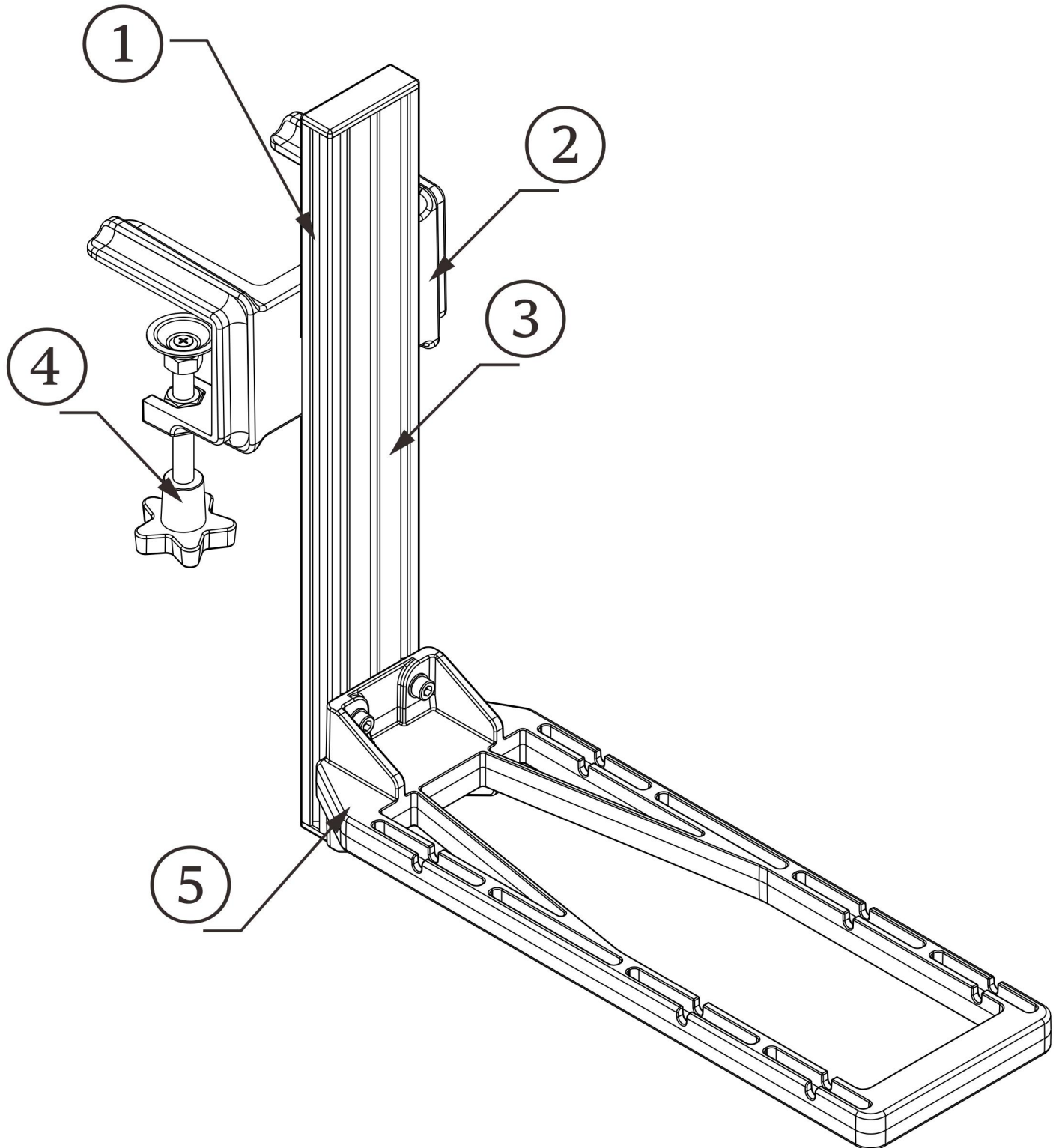
- ①. Profile assembly (1#)..... 1
- ②. MTX bracket (2#)..... 1
- ③. Handle bolt (3#)..... 2
- ④. Clamping bracket 2 (4#)..... 1
- ⑤. Bracket pad 1 (5#)..... 2
- ⑥. Toolkit (T1~T5)..... 1
- ⑦. Accessory Pack 1 (6#~14#)..... 1
  - 6#: Flat pad M6\*12\*1;
  - 7#: Hexagon Socket cylindrical head screw M6\*12;
  - 8#: Hexagon socket head screw M6\*14;
  - 9#: Hexagon socket head screw M6\*35;
  - 10#: Hexagonal nut M6;
  - 11#: Flat pad M4\*12\*1;
  - 12#: Square nut M4;
  - 13#: Hexagon socket head screw M4\*32
  - 14#: Hexagon nut M10;
- ⑧. Accessory Pack 2 (15#~18#)..... 1
  - 15#: Flat pad M5\*10\*1;
  - 16#: Elastic nut 20 Euro standard M5;
  - 17#: Hexagon socket cylindrical head screw M5\*50;
  - 18#: Spring Pad M5

## 目录

1. Product Introduction	4
1.1 Part Introduction	错误! 未定义书签。
1.2 Performance Parameters	5
1.3 Shape dimensions	7
1.4 Installation dimensions	8
1.5 Fit model	10
2 First-time use	10
2.1 Software Installation	10
2.2 Component mounting	10
2.3 Product Usage	11
3 Functions	11
3.1 Mechanical and special functions	11
3.2 Key Positions	11
3.3 Data interface	11
3.4 Adjustment methods	11
4 Installation Methods	12
4.1 Bracket assembly	12
4.2 Up and down adjustment	14
4.3 Installation of Orion 2 Throttle Base	16
4.4 Installation of Ursa Minor Airline Throttle	19
4.5 Installation of Orion 2 ViperAce EX Throttle Combo	21
4.6 Installation of the PTO2	22
5 Maintenance	26
5.1 Firmware upgrade	26
5.2 Cleaning and maintenance	26
5.3 Frequently asked questions and after-sales service	27
6 Safety Precautions	27
7 Disclaimer	28

## 1. Product Introduction

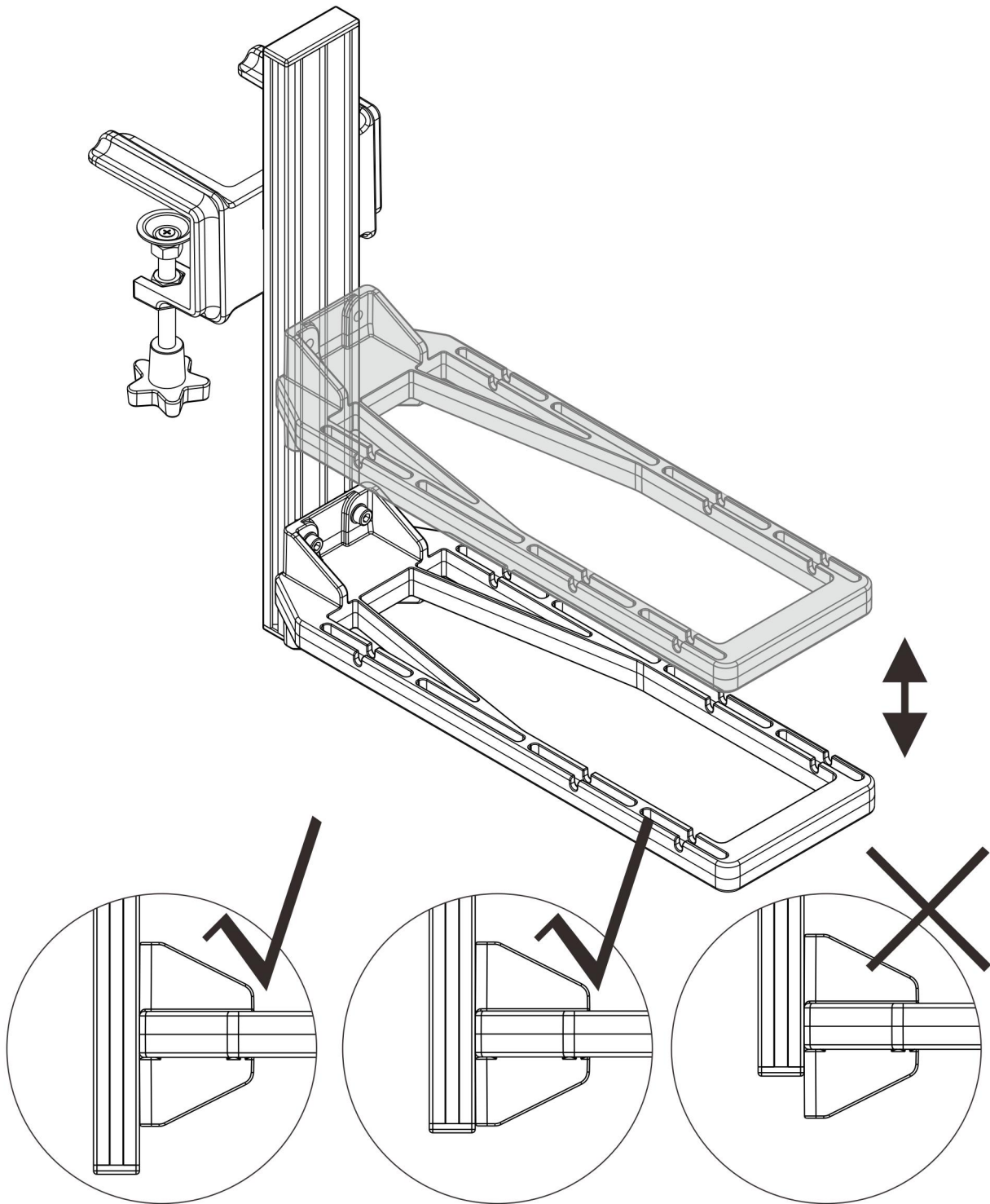
### 1.1 Component Introduction

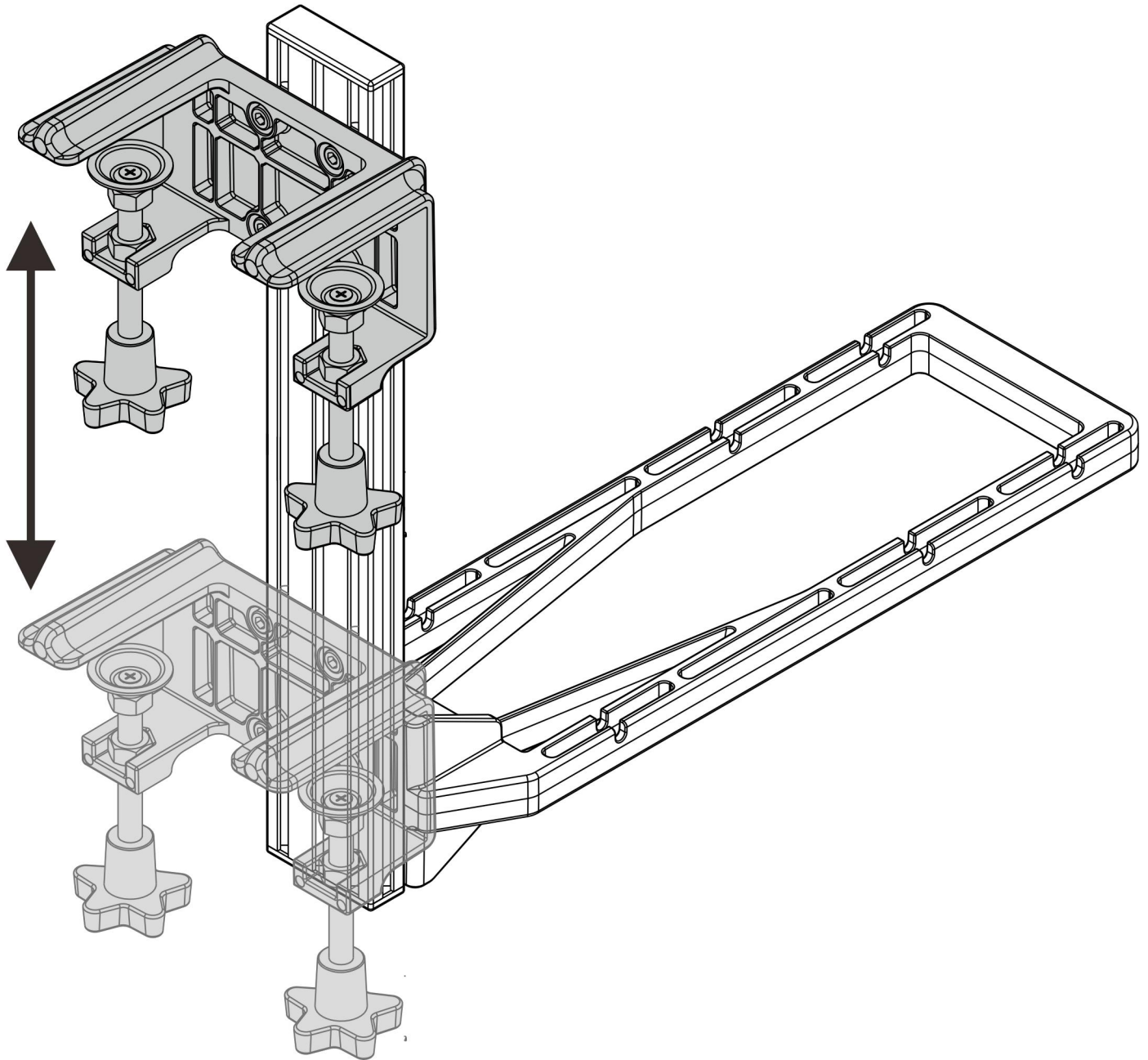


① Bracket pad mounting slot ② Clamping bracket ③ Profile assembly ④ Handle bolt ⑤

MTX bracket

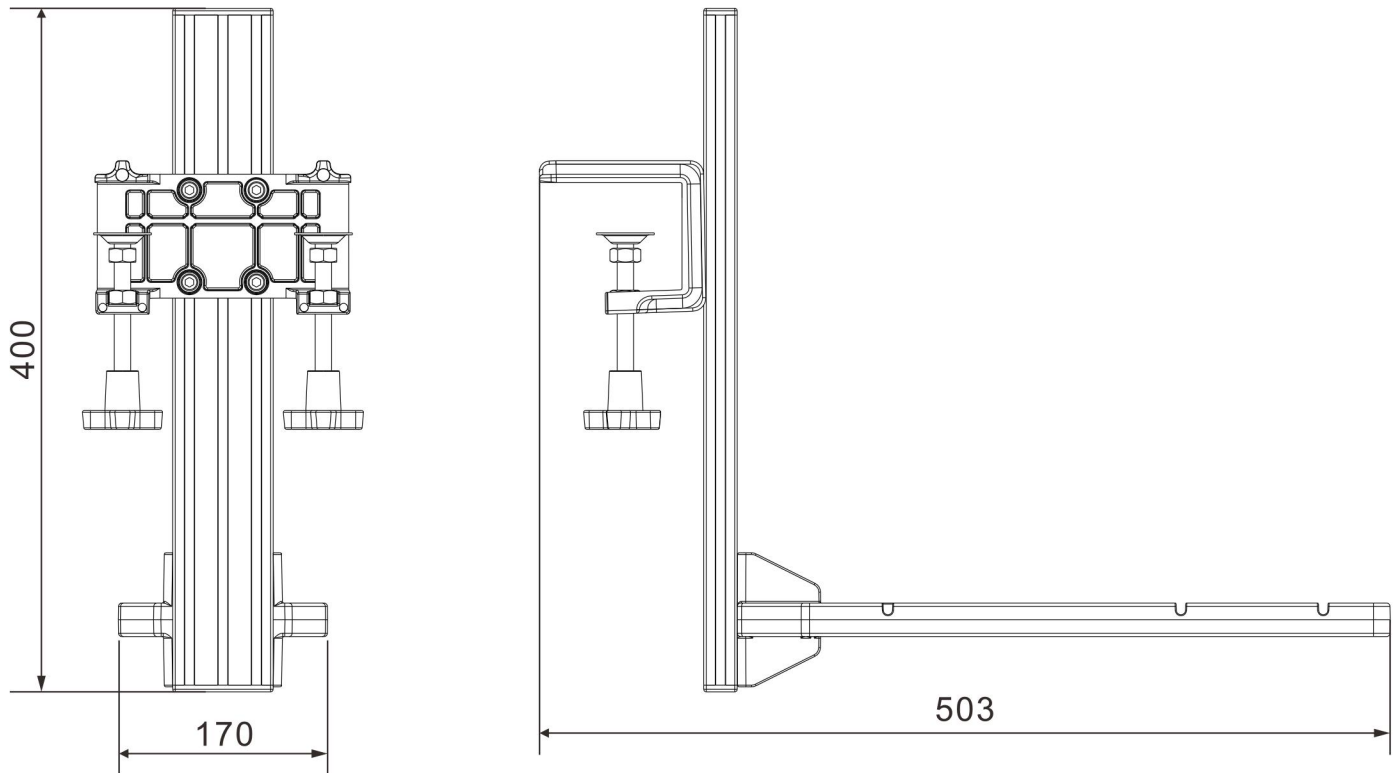
## 1.2 Performance Parameters



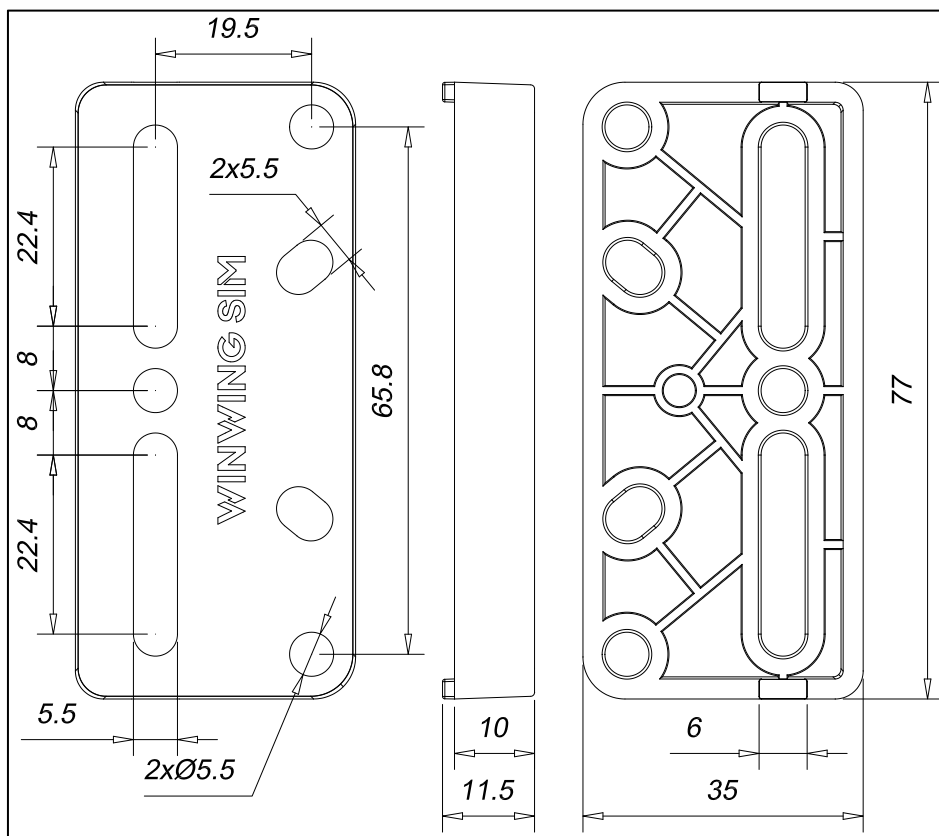


1. Both the MTX bracket and the clamping bracket 2 can be adjusted up and down within the slide groove of the profile, with an adjustment travel of  $\geq 200\text{mm}$ . Excessively high or low positions may impact usability. Please adjust according to your actual needs.

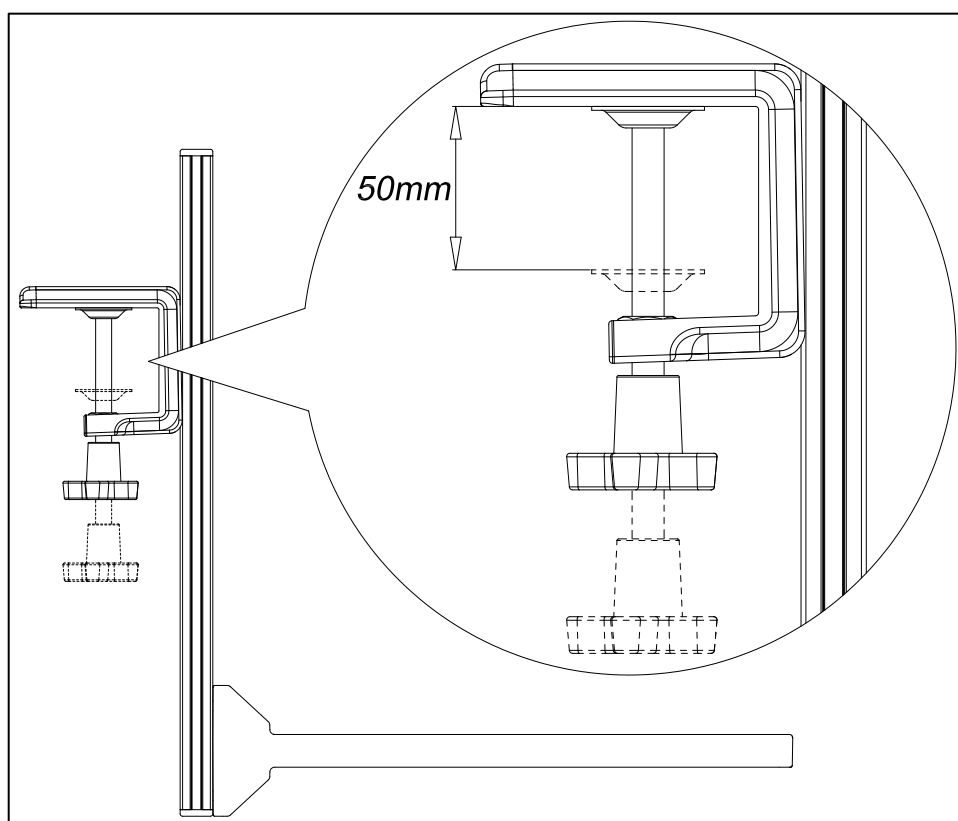
### 1.3 Shape dimensions



- The product dimension is 503mm\*170mm\*400mm after installation; The weight is 1.8Kg=4lb (The data in this manual and the dimensions marked on the drawing are design values. Due to the inevitable errors in the manufacturing and assembly process, the actual values cannot be exactly the same as the design values. Please refer to the actual product.)
- Bracket pad size (Hole diameter fits M5 screw. Unless otherwise specified, size measurement in this manual are all in millimeter.)

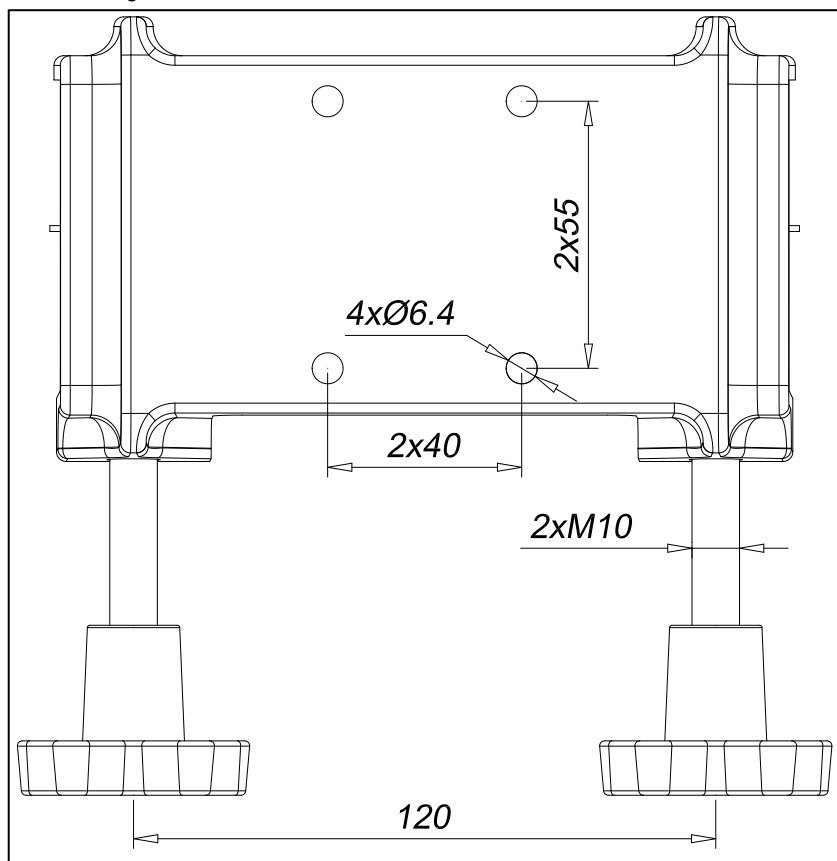


## 1.4 Installation dimensions

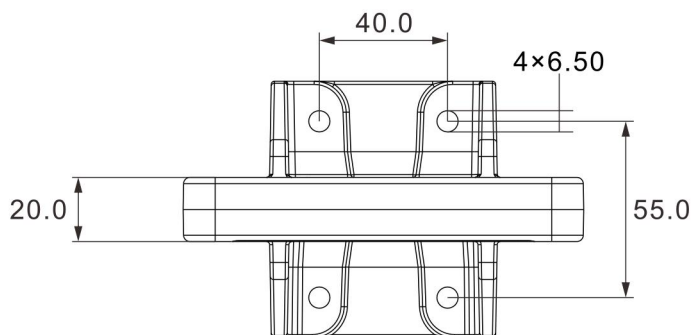
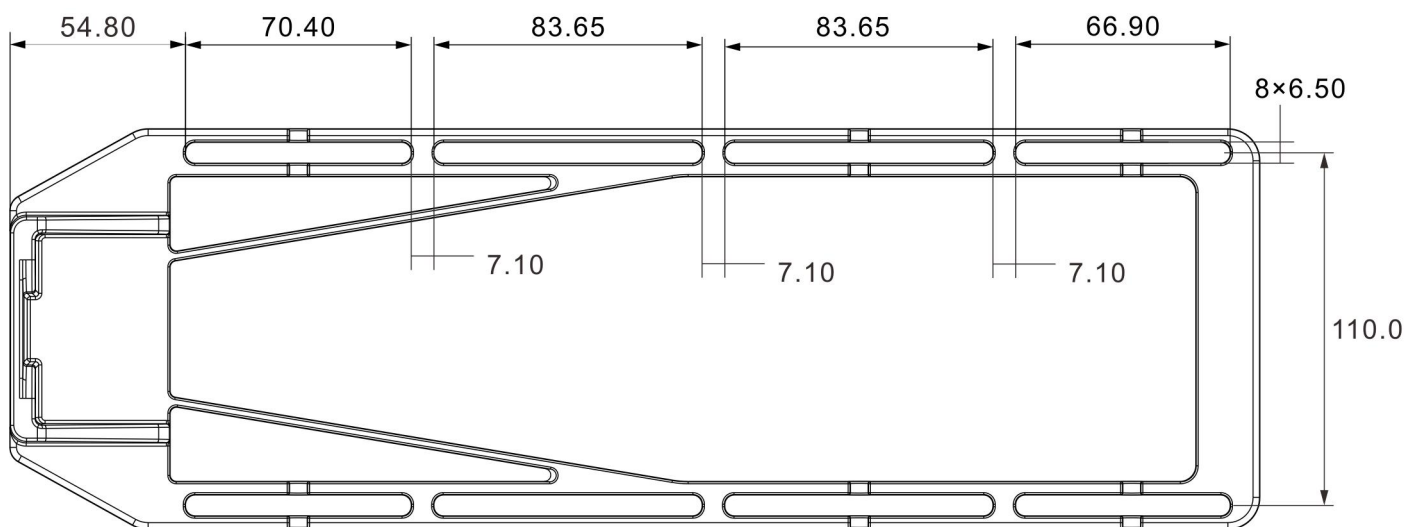


The thickness of the desktop should be  $\leq 50\text{mm}$ , and the desktop compressive strength should be  $\geq 1.8\text{ MPa}$ . (1. Depending on the material, clamping may cause indentations, scratches, or deformation. Perform a trial fit first, gradually increasing clamping force to assess acceptable limits. 2. Desktops must resist flexing, as deformation may lead to

increased mount instability.)



Hole diameter fits M6 screws



Hole diameter fits M6 screws

## 1.5 Fit model

- Orion Throttle Base;
- Orion 2 Throttle Base 10th Anniversary Edition
- Orion 2 NavyAce Throttle Combo;
- Orion 2 StrikeAce E/EX Throttle Combo;
- Orion 2 ViperAce Throttle Combo;
- Ursa Minor Airline Throttle;

Only one of the above bases can be installed, not all at the same time;

- One PTO 2 Panel of Take Off. Can be installed together with one of the above bases.
- Supports replacement of European Standard 4080 Profile (replacement profiles and accessories need to be self-prepared).

Recommended specification for self-prepared replacements:

Item	Specifications	Quantity (at least)
Profiles	Euro standard 4080	1
Profile Nut	Type 40-M6	8
Hex socket cylindrical head screw	M6*18	4
Hex socket cylindrical head screws	M6*20	4

## 2 First-time use

### 2.1 Software Installation

(Empty)

### 2.2 Component mounting

(Empty)

## 2.3 Product Usage

- The components of the product are mechanically connected. Scratches and indentations may occur during installation, use, and adjustment, but will not affect the product's functionality.
- The main material of the product is aluminium, which is a reactive metal. During transportation and use, contact with acids, alkalis, oxidants, sweat stains, etc. will cause oxidation on the surface, resulting in discoloration, which will not affect the product's functionality.

## 3 Functions

### 3.1 Mechanical and special functions

(Empty)

### 3.2 Key Positions

(Empty)

### 3.3 Data interface

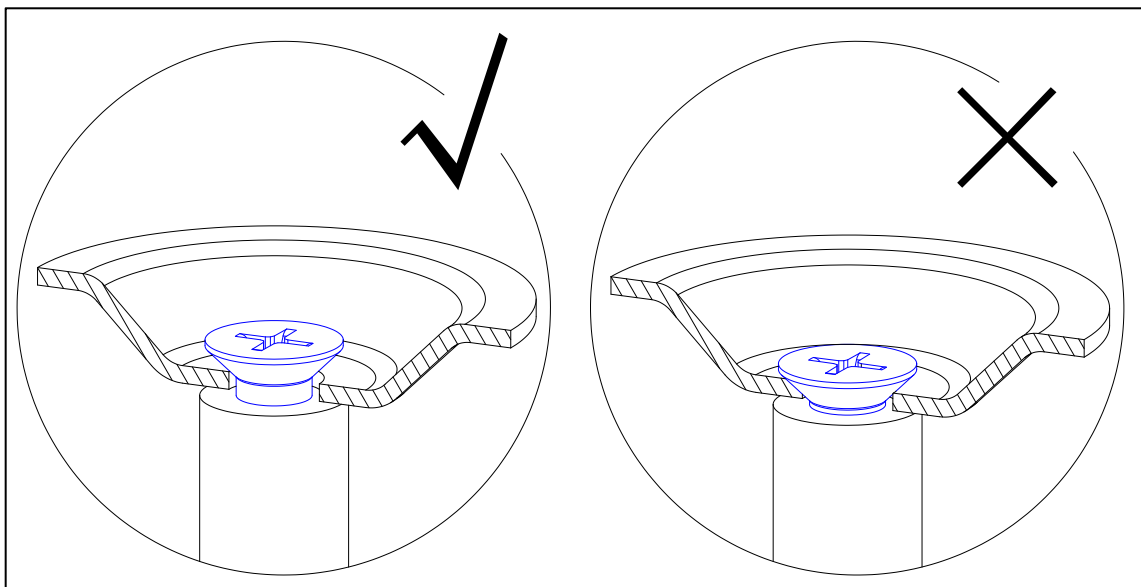
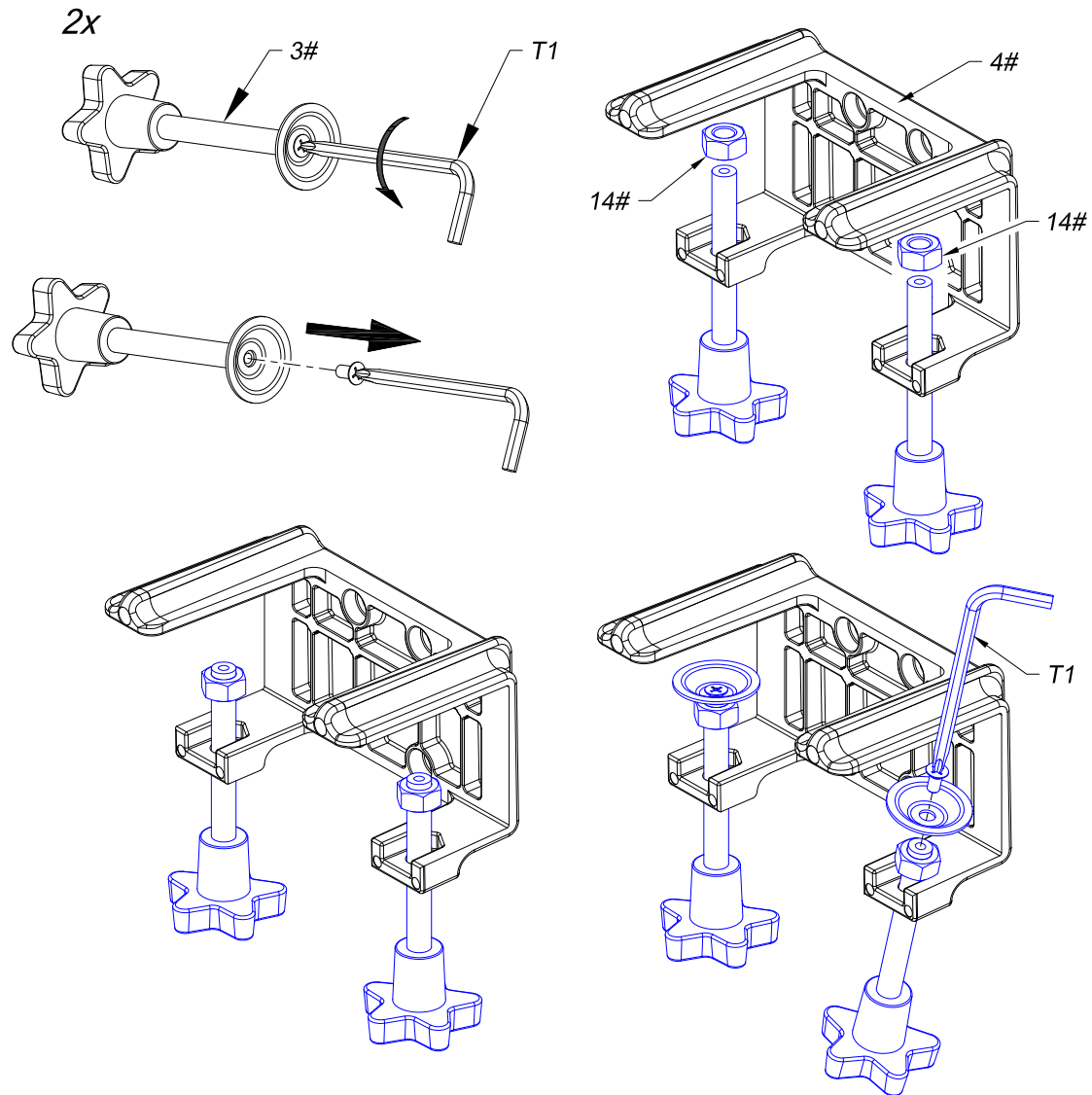
(Empty)

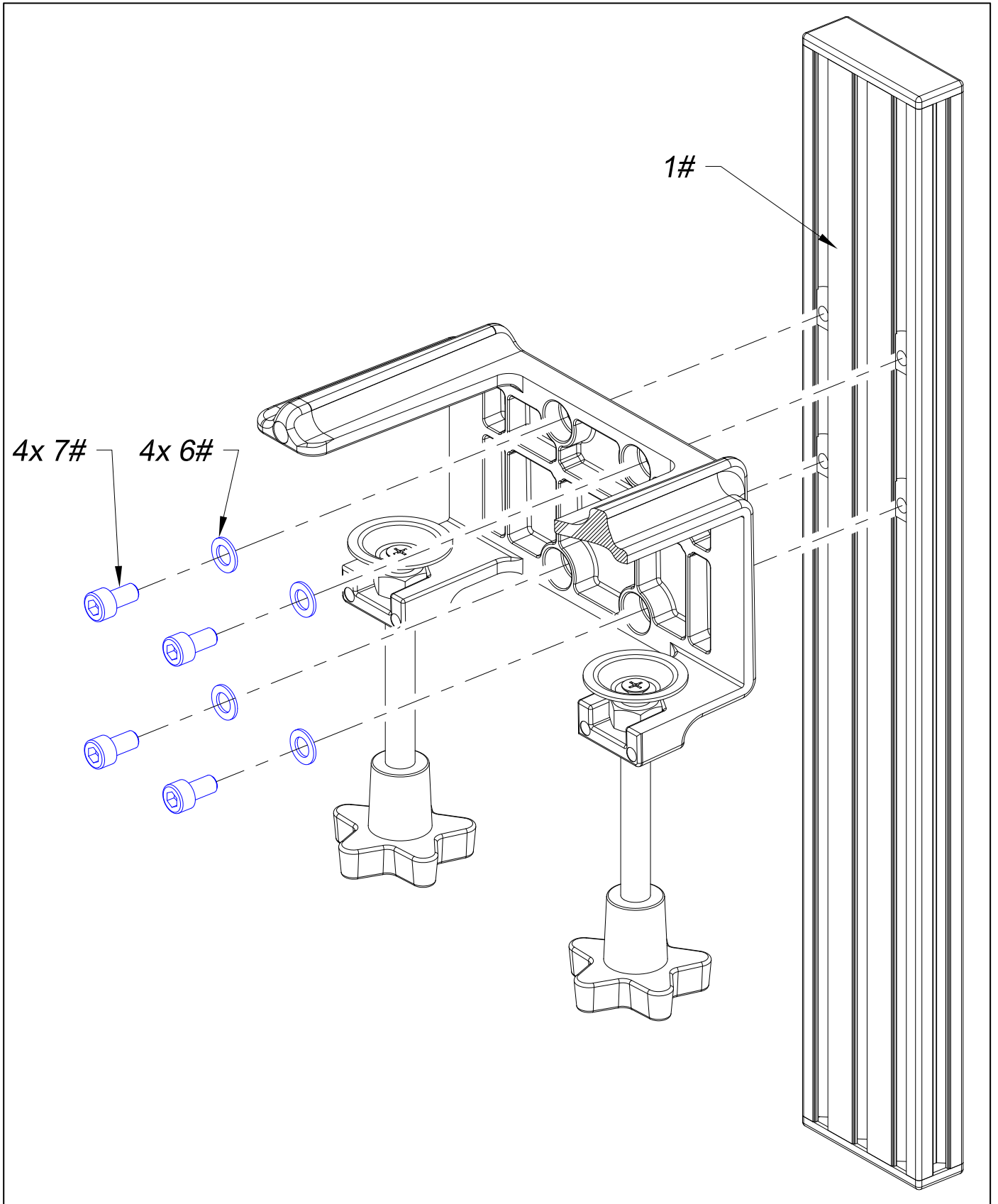
### 3.4 Adjustment methods

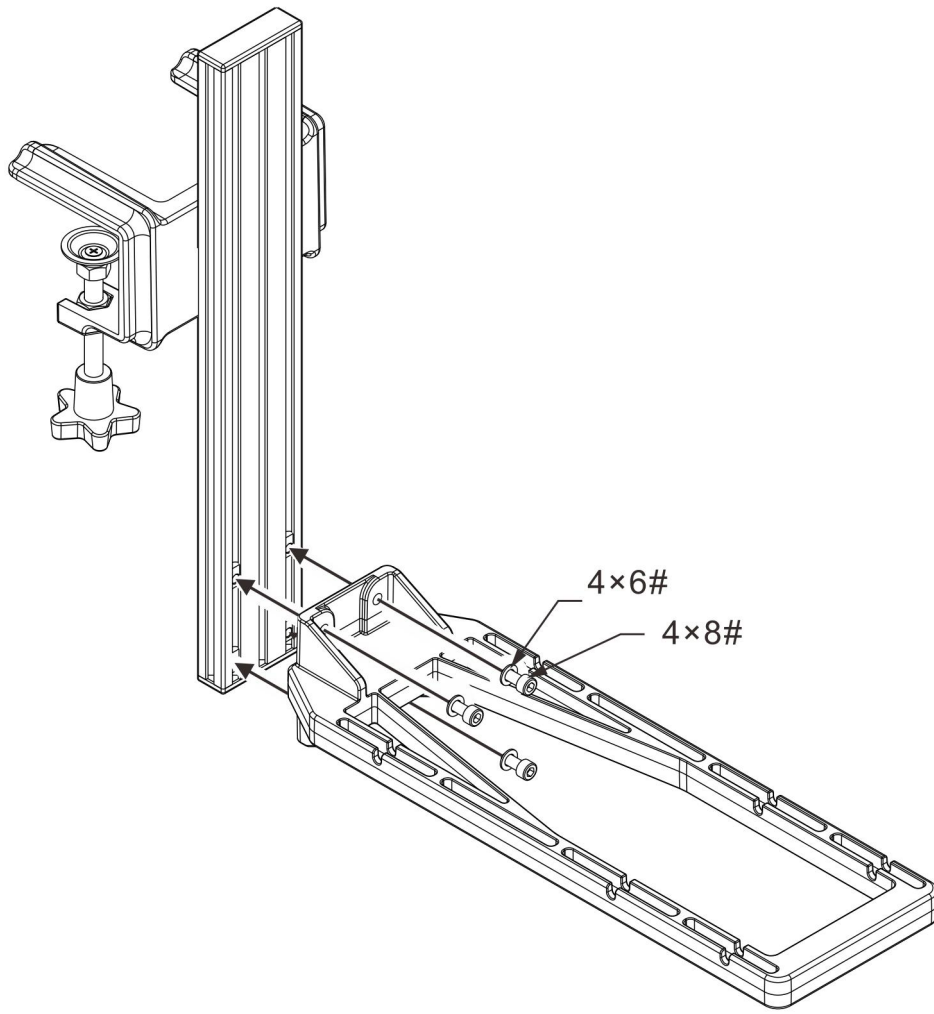
- Supports adjustment in four directions: front and back, up and down (for detailed adjustment methods, see Chapter 4 of this manual: Installation Methods).

## 4 Installation Methods

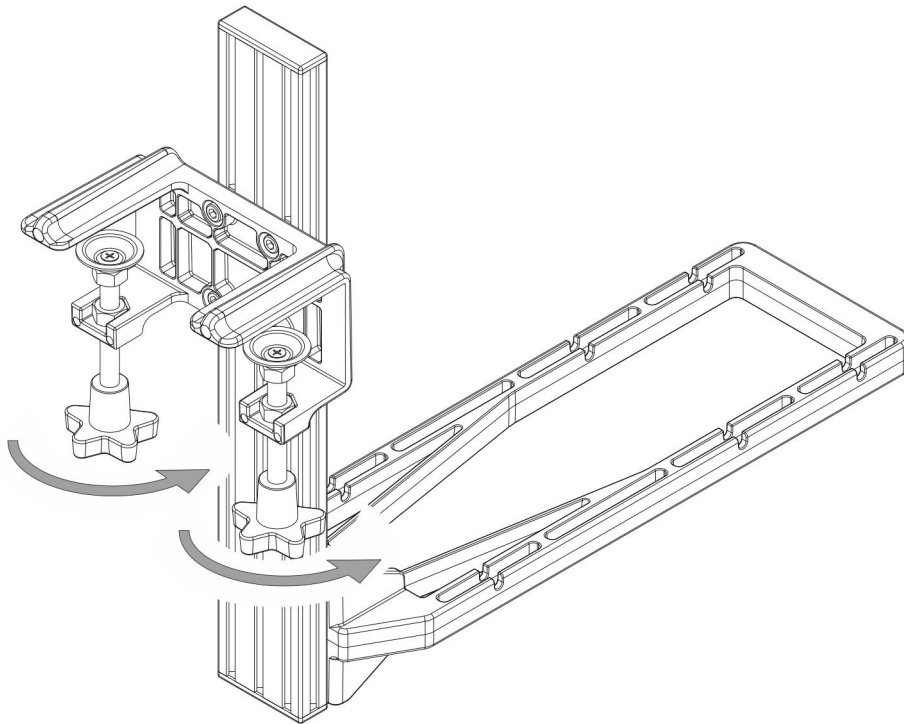
### 4.1 Bracket assembly



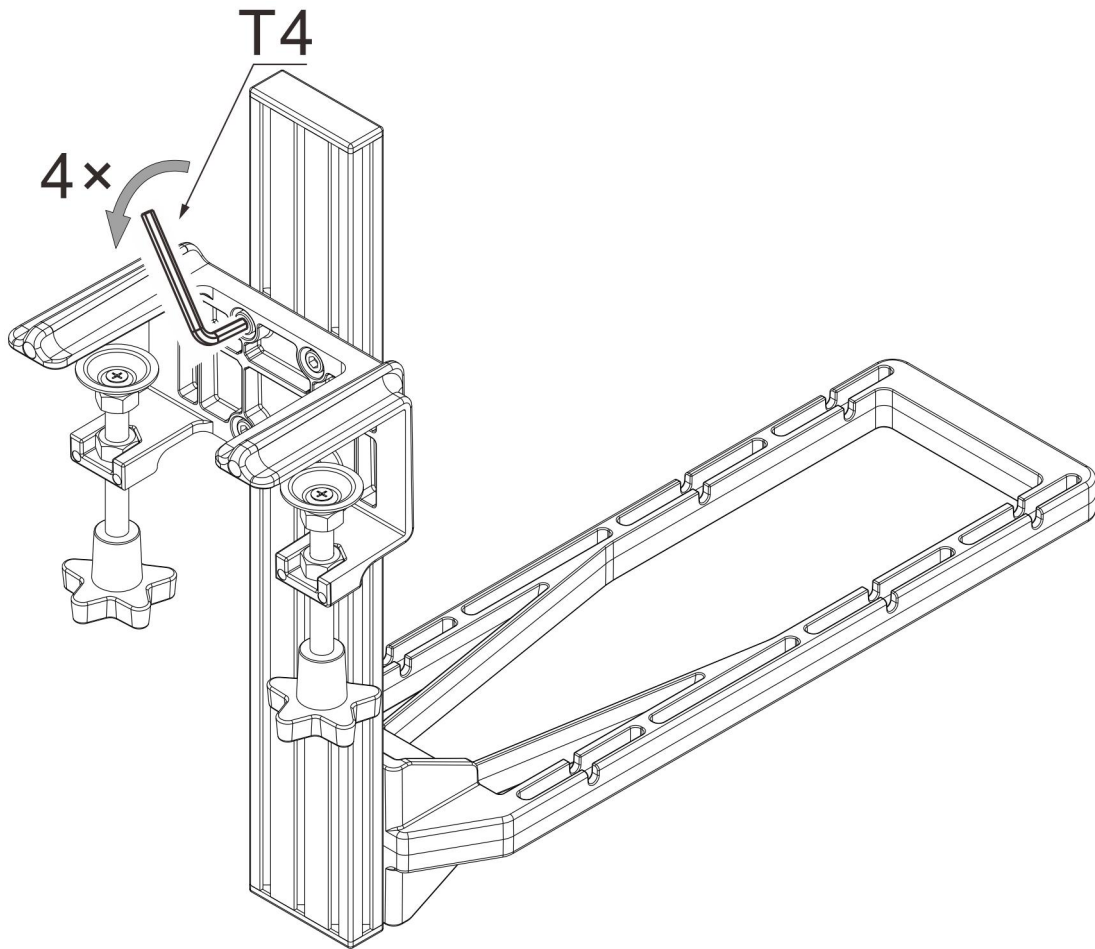




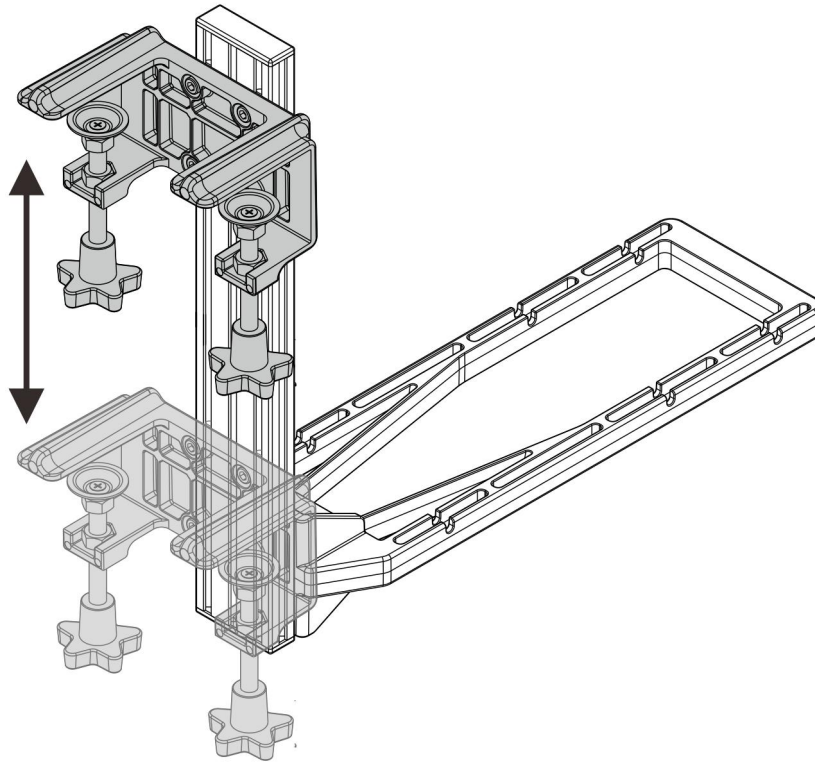
## 4.2 Up and down adjustment



Rotate the handle bolt until the opening size of the clamp is close to the thickness of the desktop.



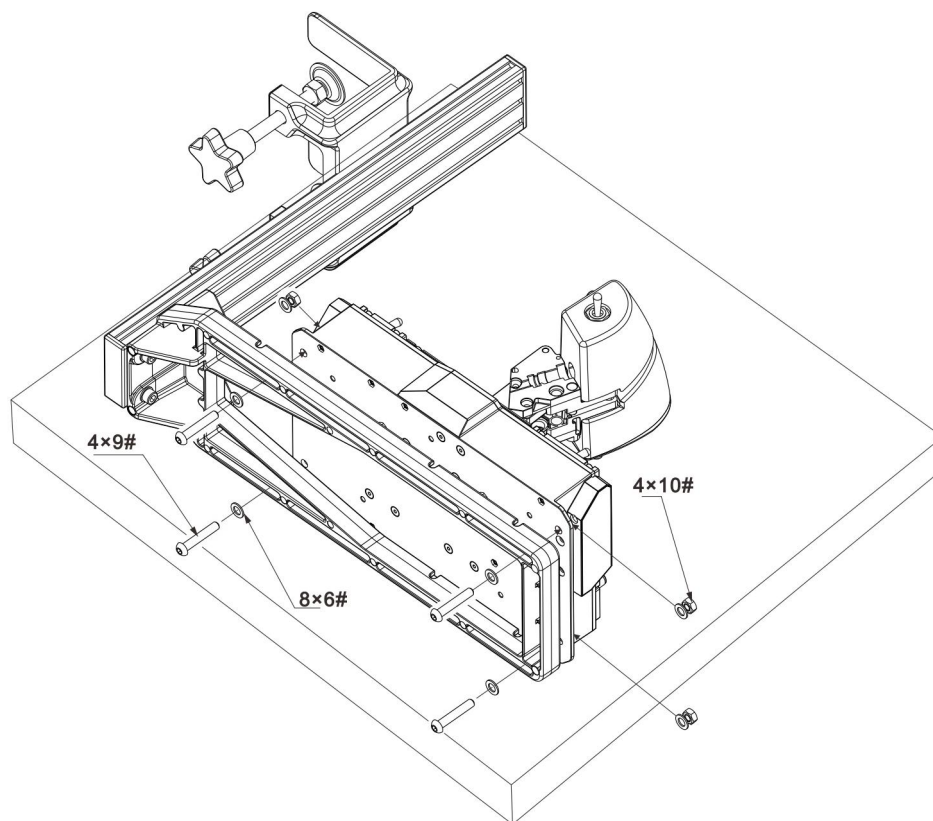
Loosen the screws by half to one turn.



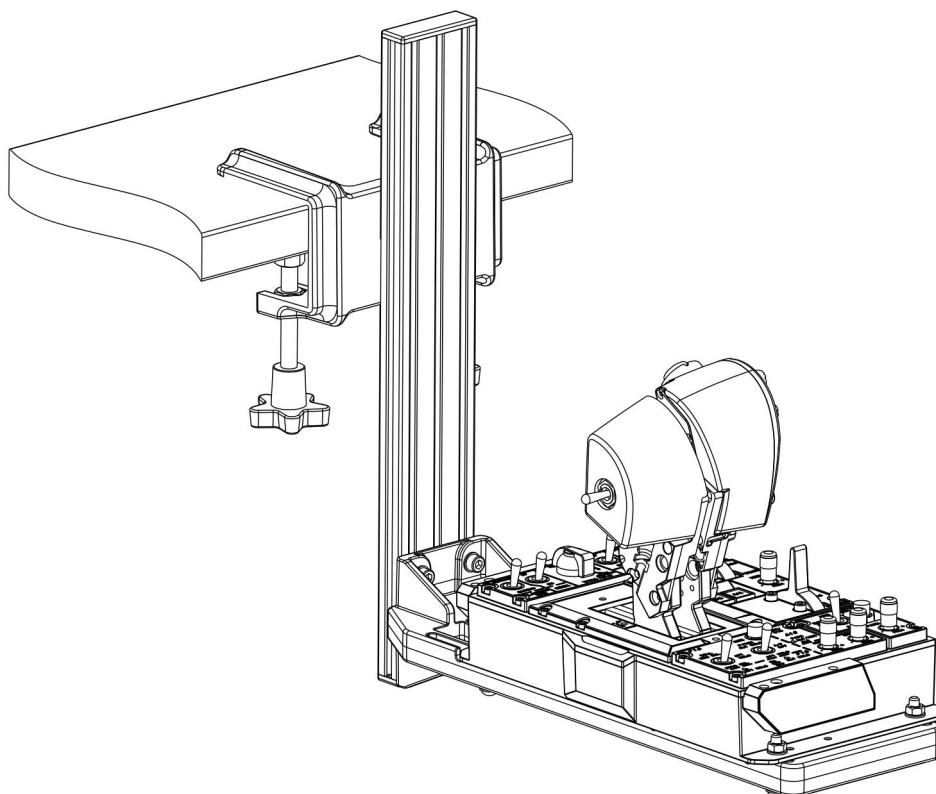
After adjusting the bracket up and down to the proper position, tighten the screws.

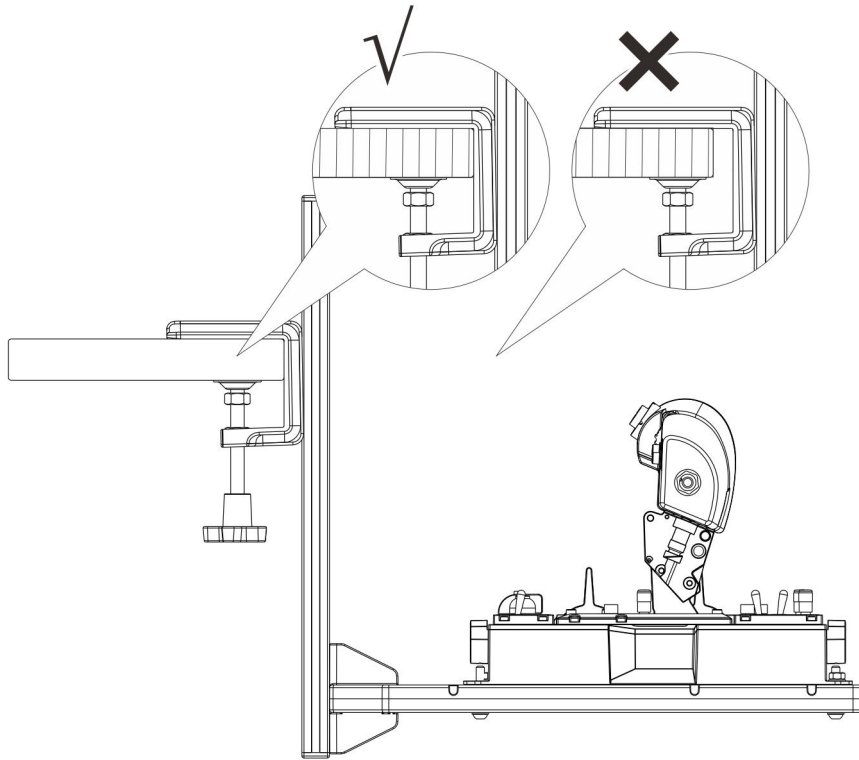
### 4.3 Installation of Orion 2 Throttle Base

- This section uses the Orion 2 NavyAce Throttle Combo as an example. Other Orion series throttle combos are installed in the same way and will not be repeated.

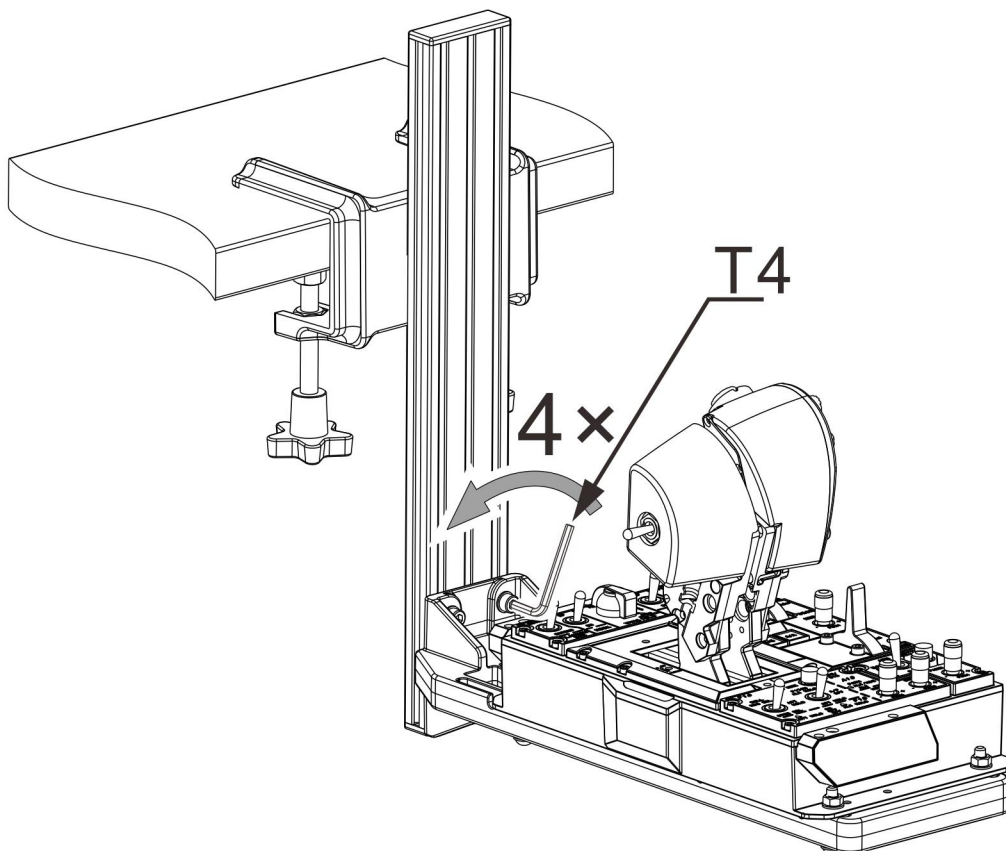


- Place the Orion 2 NavyAce Throttle Combo on the MTX bracket, adjust the front and back positions, and then tighten the screws.



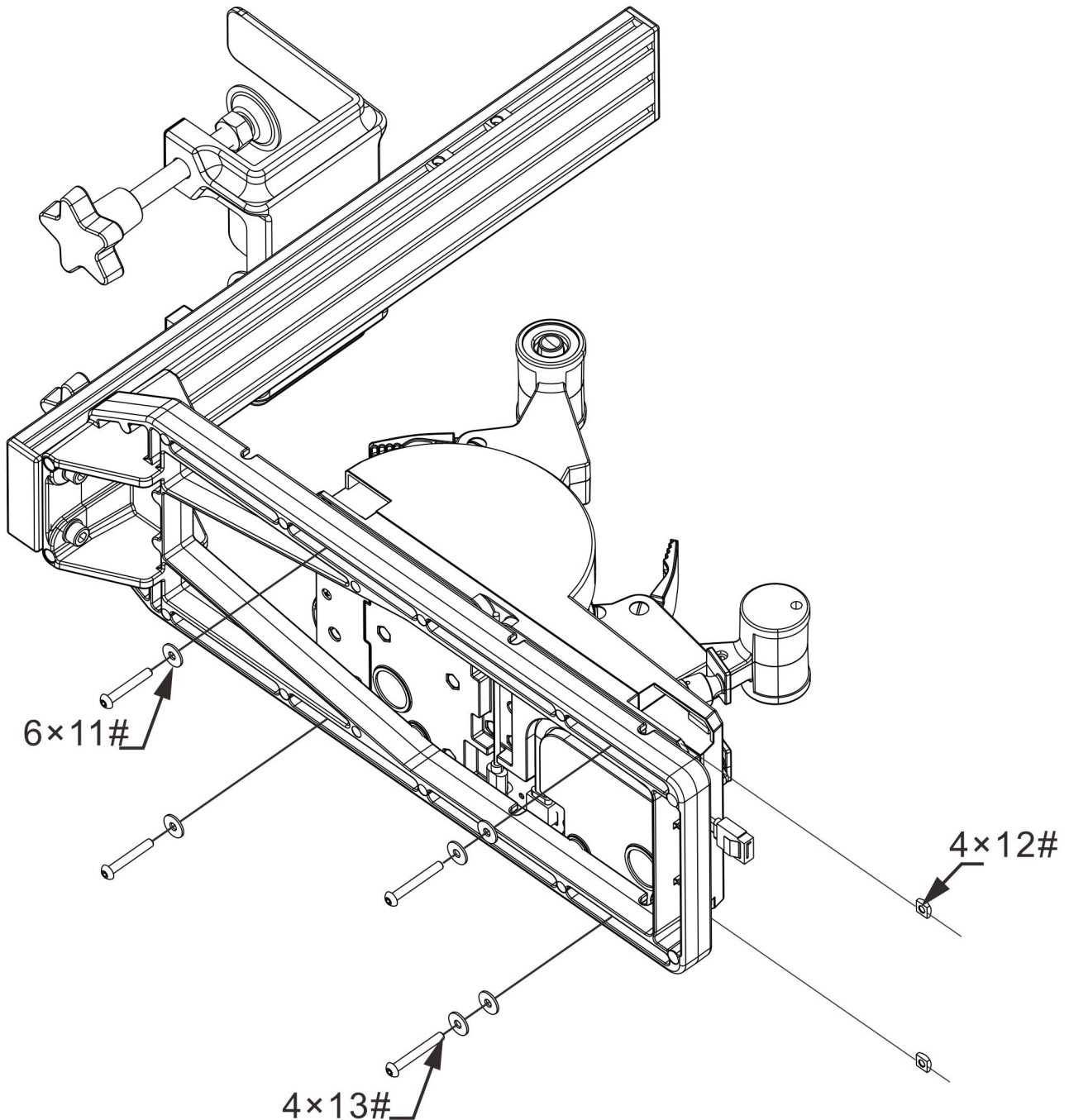


- Clamp the mount on the table and alternate tightening the handle bolts left and right with a torque of  $2.5\text{N} \cdot \text{m}$ .

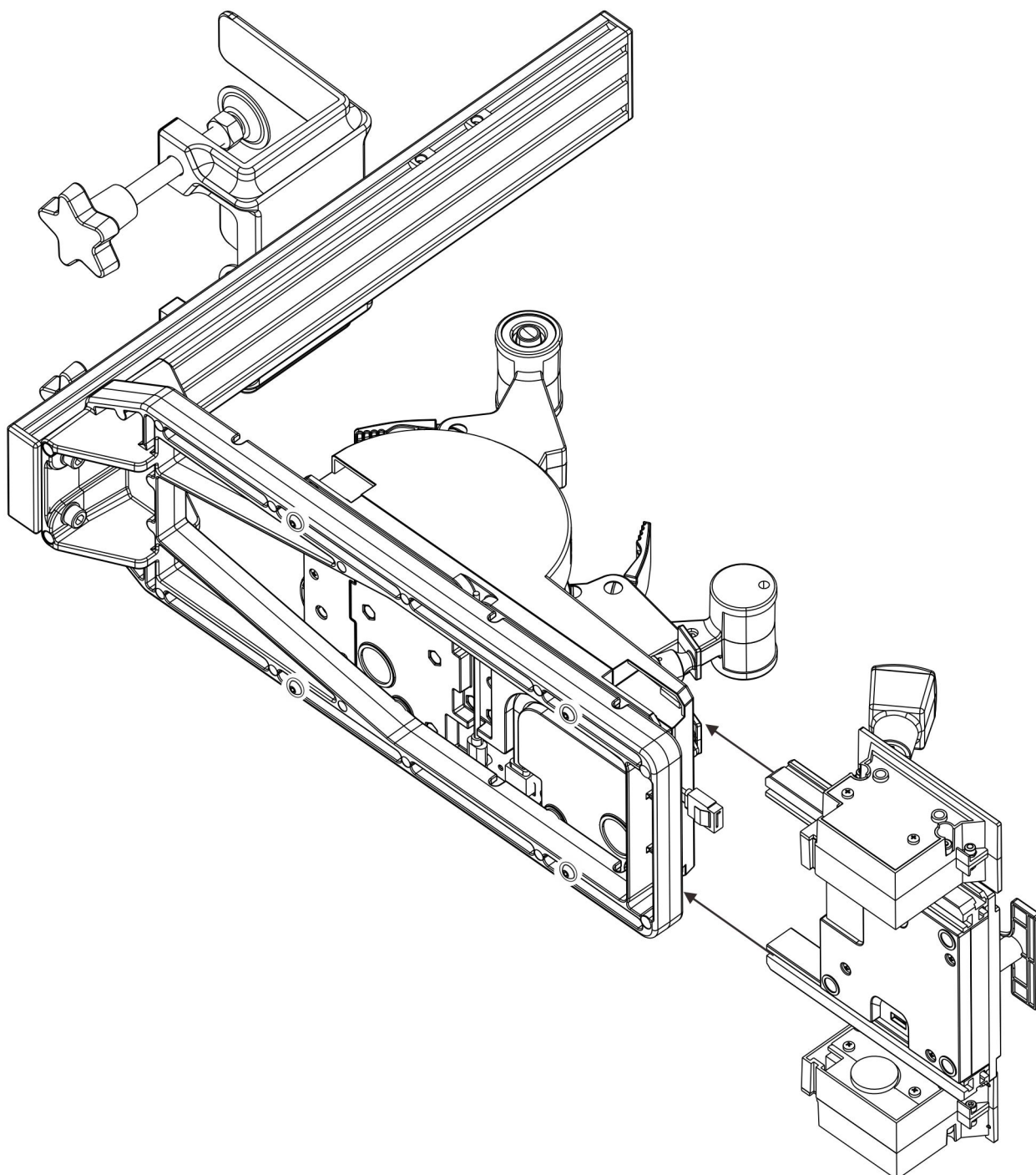


- Loosen the four screws that connect the profile to the MTX bracket, adjust the MTX bracket up and down to a suitable height and tighten the screws.

#### 4.4 Installation of Ursa Minor Airline Throttle



- Place the Ursa Minor Airline Throttle on the MTX bracket, adjust the front and back positions, screw in but do not tighten yet.

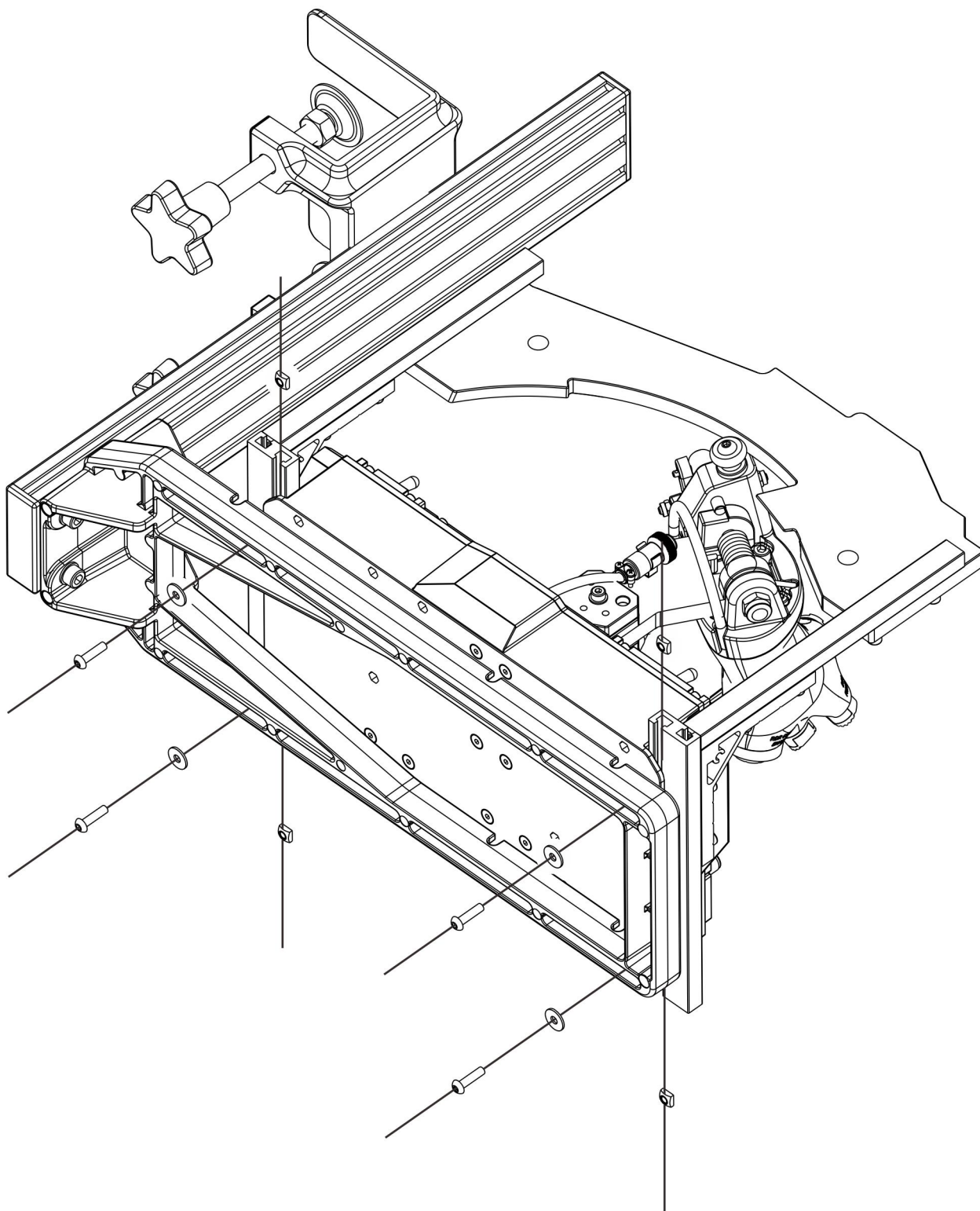


- Push the PAC into the base of the Ursa Minor Airline Throttle, adjust the position and then tighten the screws.

Follow the instructions in Section 4.3 of this manual for the following two steps:

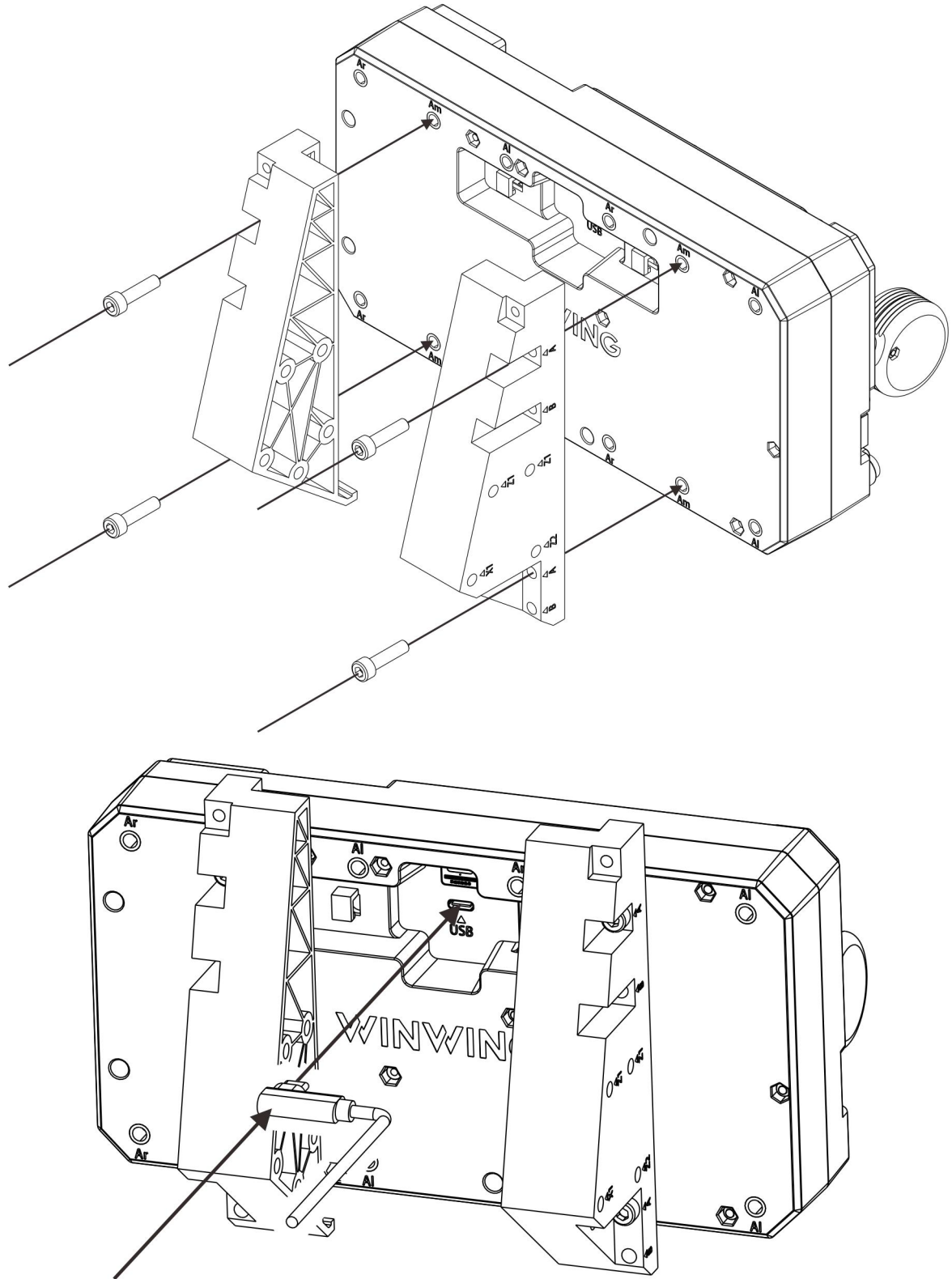
- Clamp the mount on the desktop and alternate tightening the handle bolts left and right with a torque of  $2.5\text{N} \cdot \text{m}$ .
- Loosen the four screws that connect the profile to the MTX bracket, adjust the MTX bracket up and down to a suitable height and then tighten the screws.

## 4.5 Installation of Orion 2 ViperAce EX Throttle Combo

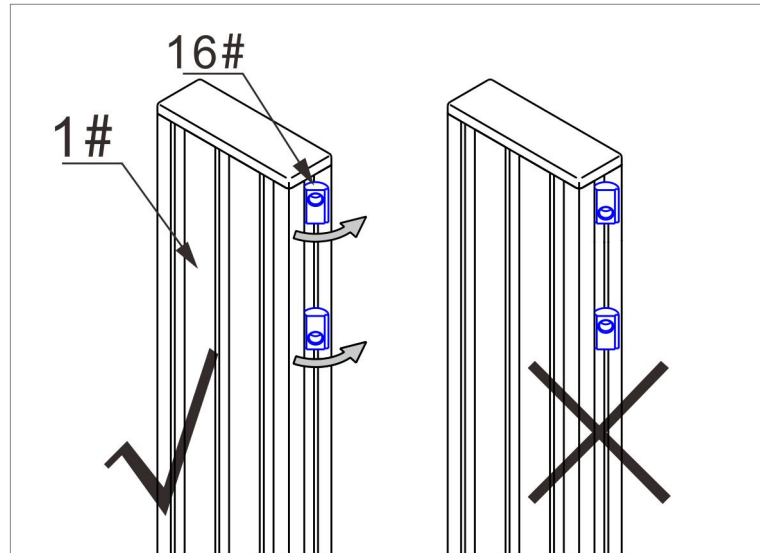


- Place the Orion 2 ViperAce EX Flight Throttle Kit on the MTX stand, tighten the screws after adjusting the front and back positions.  
Follow the descriptions in Section 4.3 of this manual for the following two steps:
- Clamp the mount on the desktop and alternate tightening the handle bolts left and right with a torque of  $2.5\text{N} \cdot \text{m}$ .
- Loosen the four screws that connect the profile to the MTX bracket, adjust the MTX bracket up and down to a suitable height and then tighten the screws.

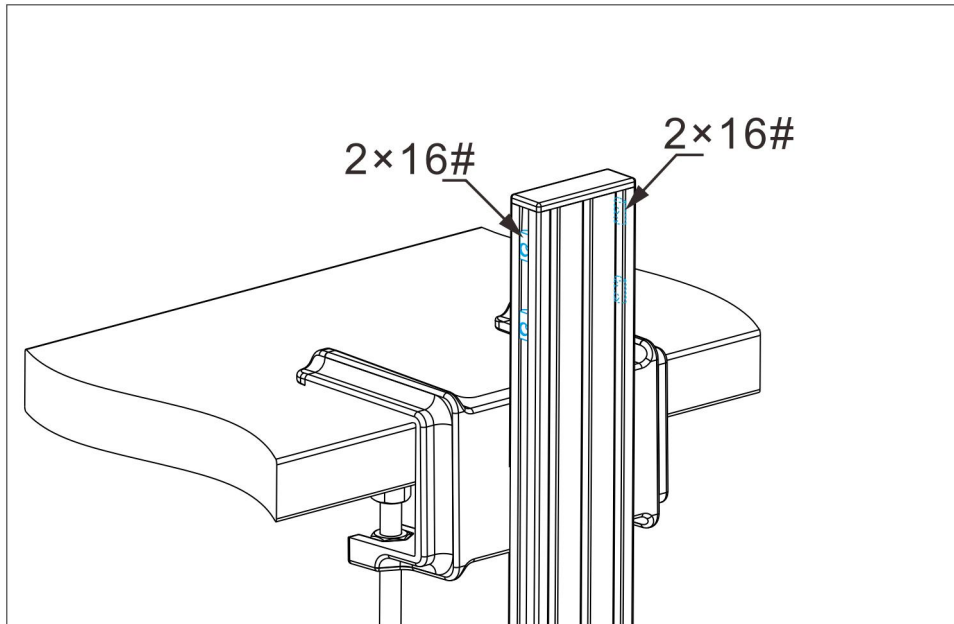
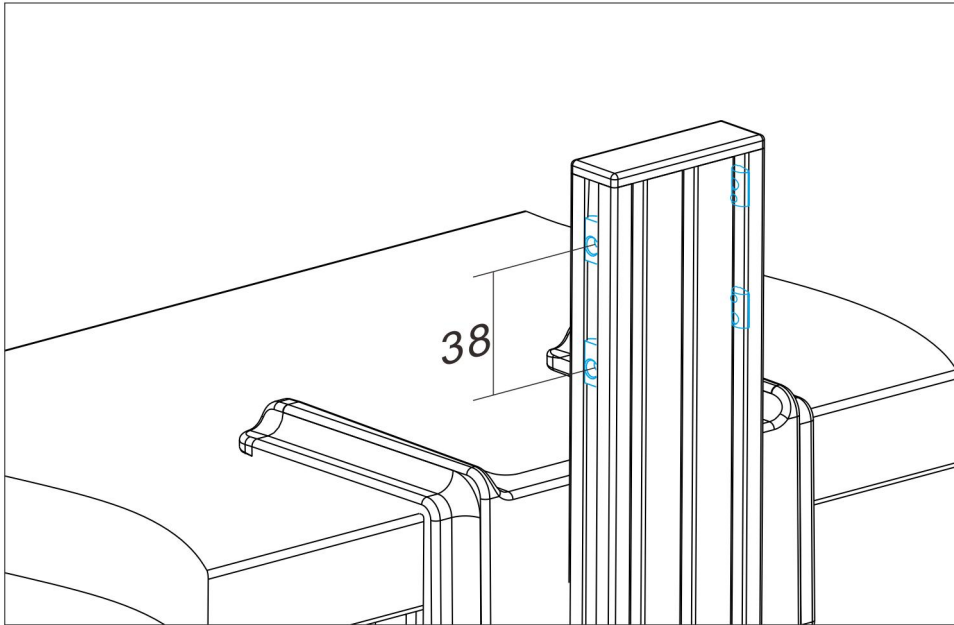
## 4.6 Installation of the PTO2

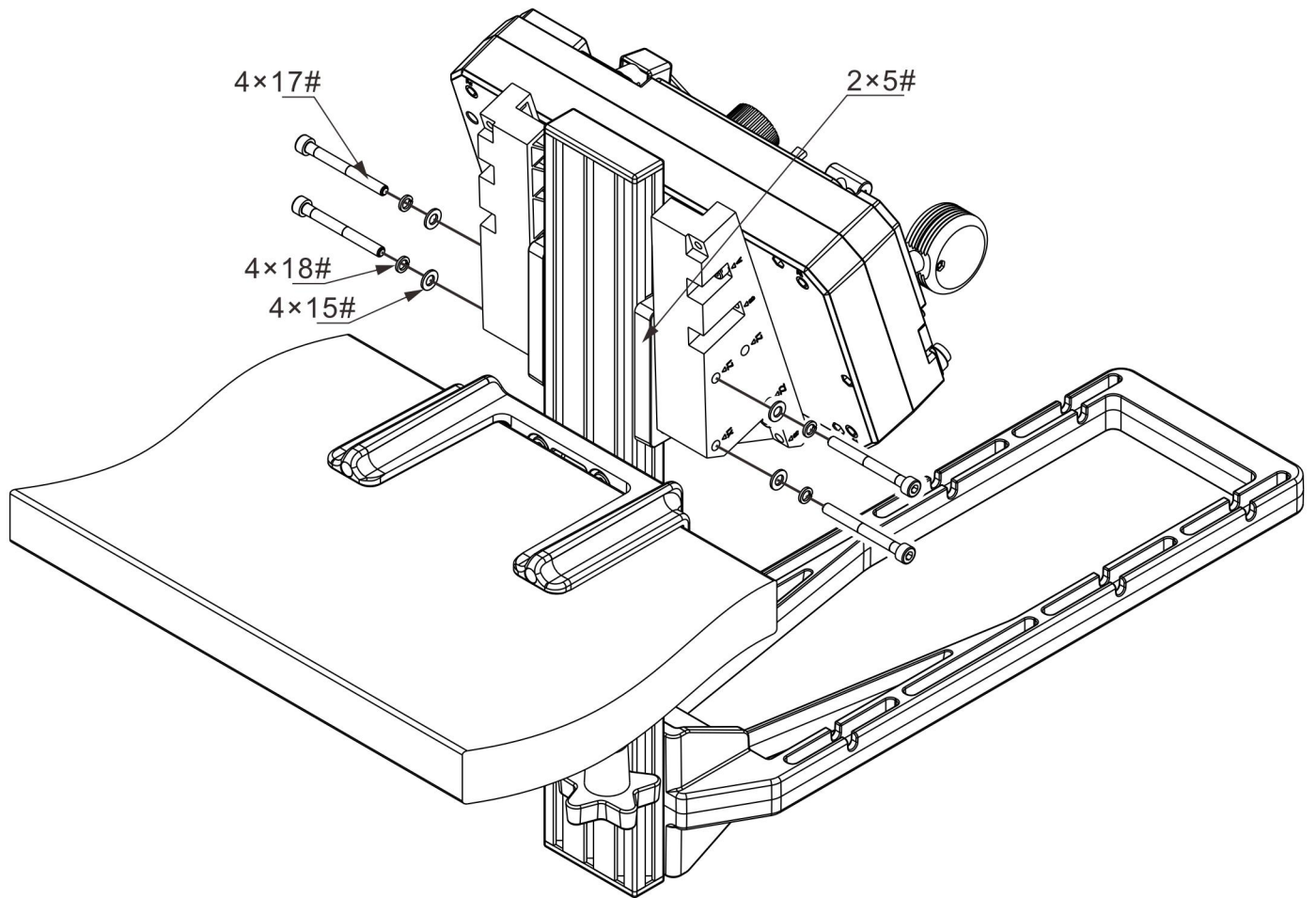


- Install the bracket for PTO2 as per Article 1 of Section 4.1 of the PTO2 User Manual for Am hole installation, and install the data cable as described in that section.
- Adjust the clamping bracket to the correct position as described in Section 4.2 of this manual.
- Clamp the mount as described in Section 4.3 of this manual, alternately tightening the handle bolts left and right with a torque of  $2.5\text{N} \cdot \text{m}$ .



- Insert the profile nut into the profile slot (note the direction of the profile nut).





- Place the two bracket pads (5#) on both sides of PTO2 respectively between the supports and the profile (1#). Note that the direction of the bracket pads should be consistent with the drawing. Screw in but do not tighten them yet.
- Adjust the position of PTO2 and tighten the screws until there is no wobbling. Over-tightening may cause deformation.

## 5 Maintenance

### 5.1 Firmware upgrade

(Empty)

### 5.2 Cleaning and maintenance

- Avoid contact with dirt, solvents, salts, acids, alkalis, etc. Keep the product clean.
- It is recommended to clean the product after use. Residues on the product may cause corrosion of the product.
- Do not use this product beyond its limits.
- Do not place this product in areas with excessive heat, such as in a car exposed to direct sunlight. High temperatures may cause the product to malfunction.
- If the product is suddenly moved from a cold place into a warm room, it may cause condensation on the product's surface and its internal parts. To prevent condensation, place the product in a sealed plastic bag first, and then remove it from the bag as the temperature gradually rises.
- Avoid storing the product in places such as chemical laboratories where there are chemicals that can cause rust and corrosion.
- Recommend using original factory parts for maintenance and replacement.

## 5.3 Frequently asked questions and after-sales service

FAQs:

- When assembling and connecting products and accessories, make sure that the fixing screws are properly tightened and that the components are not loose or over-tightened. Otherwise, it may cause abnormal noise during the use of the product.

## 6 Safety Precautions

Be sure to read these notes for safe use of the product.

Please follow these instructions to prevent damage or injury to the product user or others.

- Keep the product out of the reach of children.
- It is very dangerous to swallow product parts or accompanying items. Seek medical attention immediately if swallowed by accident.
- Do not modify the product.
- Do not subject the product to strong impacts or vibrations; Stand withstand up to 25Kgf, exceeding will cause damage; Products attached to the bracket should follow the terms of use of the product itself.
- Do not clean the product with organic solvents such as alcohol, gasoline or paint thinner.
- Do not wet the product. Do not insert foreign objects or pour liquids into the product.
- Do not use the product in an environment where flammable gas may be present, otherwise it may explode or catch fire due to static electricity.

## Disclaimer

Please read and understand the contents of the product user manual carefully. Failure to follow the instructions may result in personal injury or damage to the product.

Please make sure that all people using this product are familiar with and understand the product user manual in order to maximize the value of the product.

The user shall not be held responsible for any personal injury, property loss or product damage resulting from the user 's improper operation or failure to follow the user' s manual.

When the user uses the product:

The product should be installed, handled, stored, used, maintained and disposed of in accordance with the instructions of the product guide and the requirements of relevant laws and regulations and safety standards, without violating the requirements of relevant laws and regulations.

Given that the conditions and methods in which users use this product are beyond the control of our company, if any of the following circumstances occur, the consequences shall be borne by the user personally, and our company shall not bear any responsibility for this:

Personal injury, property loss and product damage caused by improper operation of the user, failure to follow the user manual of the product or other uncertain factors.

Changes to the technical specifications and data of the product due to improvements in reliability, functionality, design or other reasons shall be subject to changes in the user manual without further notice.

NO: 20241018-01A-P

**WINCTRL**